



**Message from the Executive Director**

**Jan Engle, PharmD, PhD (Hon), FAPhA, FCCP, FNAP**



**A**CPE staff have had a very busy summer and fall. As detailed later in this newsletter, staff spent many months preparing our documents for our petition for continued recognition by the US Department of Education. We met with the National Advisory Committee on Institutional Quality and Integrity (NACIQI) of the US Department of Education (USDE) in mid-July. We were pleased with the discussion and now await the decision letter from the US Secretary of Education.

**New office**

While in the midst of planning for our June Board meeting and our recognition by USDE, we also moved our office from the 28th to the 30th floor in our current building. Our new suite contains a large conference space as well as break-out rooms that will allow us to offer training on-site in a socially distanced manner and not incur large hotel meeting space costs. We also have a sufficient number of

offices for our professional staff and a more socially distanced and safer space for our administrative staff. We have already offered several workshops on site. The new space has served us well despite some construction and material delays.

**ACPE on the road**

ACPE was well represented at the AACP Annual Meeting in July. Dimitra Travlos moderated a session at the meeting entitled, “Examining Unconscious Bias Through the Continuing Professional Development (CPD) Lens.” Kimberly Catledge facilitated a roundtable she developed entitled, “New Endeavors in Continuing Pharmacy Education.” ACPE staff were also present throughout the meeting and attended and responded to questions at the Council of Deans meeting.

Staff currently has a very heavy travel schedule for fall 2022. We have begun comprehensive evaluation site visits live and on-site. Where appropriate, we will continue to conduct focused evaluation visits virtually. In order to meet USDE



*ACPE new offices at  
190 South LaSalle Street,  
Suite 3000*





## ACPE Board of Directors

### PRESIDENT

**Reza Karimi, RPh, PhD**

*Professor  
Pacific University School of Pharmacy*

### VICE PRESIDENT

**Amy L. Seybert, BS, PharmD,  
FASHP, FCCP, CHSE**

*Dean and Professor  
University of Pittsburgh School of  
Pharmacy*

### TREASURER

**LuGina Mendez-Harper, PharmD**

*Government Affairs Principal  
Prime Therapeutics*

**Susan E. Buechele, DNP, APRN,  
CPNP-PC, IBCLC**

*Assistant Dean of Graduate Clinical  
Programs  
Marcella Niehoff School of Nursing,  
Loyola University Chicago*

**Kimberly S. Croley, PharmD, BCGP,  
FASCP, FAPhA**

*Director of Pharmacy and Clinical  
Pharmacist, Laurel Senior Living  
Communities*

**John Clay Kirtley, PharmD**

*Executive Director  
Arkansas State Board of Pharmacy*

**Winnie A. Landis, BS Pharm,  
CDE, FAPhA**

*Community Pharmacy Practitioner*

**Michael A. Moné, RPh, JD, FAPhA**

*Senior Legal Counsel  
CVS Health*

**Cindy D. Stowe, BS, PharmD**

*Dean and Professor  
University of Arkansas for Medical  
Sciences College of Pharmacy*

**Sharon L. Youmans, PharmD,**

*MPH, FAPhA  
Vice Dean, University of California  
San Francisco and Professor of  
Clinical Pharmacy*

regulations, we are also beginning to conduct on-site verification visits that are required for all comprehensive evaluation visits that were done virtually.

ACPE staff continue to be very involved in the Association of Specialized and Professional Accreditors (ASPA). Greg Boyer, Mary Kiersma and myself recently attended the fall conference in Washington, DC. Mary Kiersma served as chair of the program committee for this meeting.

## Fee structures

At our June Board meeting, the Board of Directors reviewed the current fee structures for our various accreditation and certification activities. Given that many of our constituencies have been impacted by the pandemic, the Board voted to maintain our fee structure at current levels for 2023 with no increase with the exception of the international program, which will incur a 3% increase to account for increasing costs. For colleges and schools in the US, we will continue our 30% reduction in published fees for virtual site visits. The reduced fee includes the on-site verification visit when required by the US Department of Education. Continuing education penalties have been reinstated as of September 1, 2022 but, as always, ACPE staff will work with any provider who may have questions about the correct procedures.

As of this writing, the national COVID-19 public health emergency (PHE) declaration is set to expire in mid-October. However, the expectation is that the PHE will be extended but will end by the end of the year. In a Centers for Medicare & Medicaid Services (CMS) blog post August 18, CMS leadership urged providers to start to prepare for the end of the PHE.

## Distance education

Please keep in mind that the US Department of Education has provided guidance to accreditors that allows schools and colleges to use distance education without the normal ACPE approval process for the duration of the national emergency declaration and 180 days following the date on which the COVID-19 national emergency declaration is rescinded.



Once the PHE has ended and the waiver has expired, ACPE requires one-year advance notice for the addition of a distance campus or the implementation of distance education post-pandemic for an existing college or school (more than 25% of the curriculum). Notification is required to allow ACPE sufficient time to conduct the monitoring needed to ensure readiness and continued compliance with the accreditation standards. Failure to comply with the one-year notice requirement constitutes grounds for review and potential adverse accreditation actions. If the distance education component of the curriculum is between 25–49%, notice to ACPE is all that is required. If the distance education component exceeds 50%, then a comprehensive academic plan needs to be submitted. ACPE staff are happy to answer any questions about this expectation. It is important to note that any compliance issues with the Standards that are found with the online pathway of a program is an issue for the entire program. Please plan ahead if you intend on providing more than 25% of your didactic curriculum online.

## Standards revision

The Standards revision process is well underway. As outlined later in this newsletter, the ACPE Board of Directors reviewed a summary of the comments received from our data gathering process that lasted through May of this year. The Board subcommittee began work on the revised Standards in late September and will continue to work on them for the next 18 months. Thanks to all of the individuals who submitted comments and ACCP and ASHP, who also provided formal comments on the Standards.



### JCPP

ACPE participated in a strategic planning session for the Joint Commission of Pharmacy Practitioners (JCPP). JCPP's strategic priorities were assessed along with a mapping of all of the JCPP organizations' strategic plans. The CEOs and senior staff from each organization reviewed the JCPP vision statement for current relevancy, determined how to integrate contemporary issues in the strategic plan, and discussed the priority drivers that would be needed to achieve the strategic plan.

## We want to hear from you!

If you have any questions about this information or anything in this edition of the *ACPE Update*, please don't hesitate to contact us at [info@acpe-accredit.org](mailto:info@acpe-accredit.org) or send a note to any ACPE staff member using our individual emails. ■

## Wall of Honor



*Dr. Amy Seybert*

**Dr. Amy Seybert**, ACPE Vice President, was appointed as Dean of the University of Pittsburgh School of Pharmacy effective July 1, 2022.

**Dr. Jan Engle**, ACPE Executive Director, was selected as one of the 10 women recognized in the APhA Woman in Pharmacy campaign. The distinguished women featured are a sampling of the many women in pharmacy who contribute to this vital health care profession every day. The APhA Foundation launched the Women in Pharmacy Recognition Campaign to commemorate the 10th anniversary of the dedication of the Women in Pharmacy Exhibit and Conference Room. ■



*Dr. Jan Engle*

## New CS/ISP Staff Member



**Jacob P. Gettig, PharmD, MPH, Med, BCPS, CHCP**, recently joined the ACPE staff as Assistant Director, Accreditation Services. In this role, he supports accreditation activities for US colleges and schools of pharmacy and ACPE certification activities for international colleges and schools of pharmacy. Prior to joining ACPE in 2022, Dr. Gettig was Associate Dean of Assessment and Postgraduate Affairs and Professor at Midwestern University College of Pharmacy in Downers Grove, Illinois, where he worked since 2003 as faculty and since 2009 as Assistant and later Associate Dean. In Dr. Gettig's former role, he coordinated Midwestern University College of Pharmacy's assessment efforts, managed administrative aspects of the College's residency and fellowship programs, and served as the College's CE Administrator from 2009 to 2022. Dr. Gettig earned his Doctor of Pharmacy degree from Purdue University and

subsequently completed a specialty residency in drug information. He later earned a Master of Public Health degree from Benedictine University (Lisle, IL) and a Master of Education degree in Measurement, Evaluation, Statistics and Assessment from University of Illinois at Chicago. He is board certified in pharmacotherapy and is a Certified Healthcare CPD Professional (CHCP). ■



## PharmD Program Accreditation

### Training at ACPE

ACPE hosted three College and School training events in the conference facility within ACPE's new office suite. Minor construction delays could not dampen the enthusiasm of the participants and ACPE staff in being together again for live training. The detailed and thoughtful planning of this space was evident throughout each two-day workshop. The two self-study workshops in August and the site evaluator workshop in September were each filled to capacity. ■

Participants and ACPE staff together again for live training.



### USDE/NACIQI

ACPE completed the process of continued recognition by the **National Advisory Committee on Institutional Quality and Integrity (NACIQI) of the USDE**. This process occurs every five years. A key component of continued recognition is the preparation and submission of a dossier, similar to the self-study Colleges and Schools complete, which provides documentation and evidence that ACPE meets the Department's criteria through its standards, policies and processes. After a thorough review of ACPE's petition by USDE staff, a public review was conducted by the 18-member NACIQI Board. Responding to NACIQI Committee members' questions during the July 19, 2022, virtual hearing were ACPE President Reza Karimi, ACPE Executive Director Jan Engle, and ACPE staff Greg Boyer and Dawn Zaremski. Following its review, NACIQI recommended to the US Secretary of Education that ACPE receive the maximum term of five years with no interim report. ACPE awaits the final decision of the USDE Secretary. ■

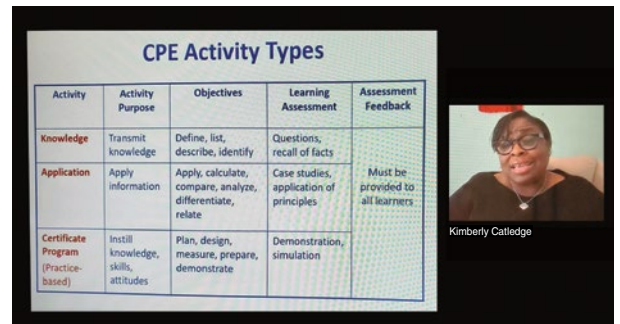
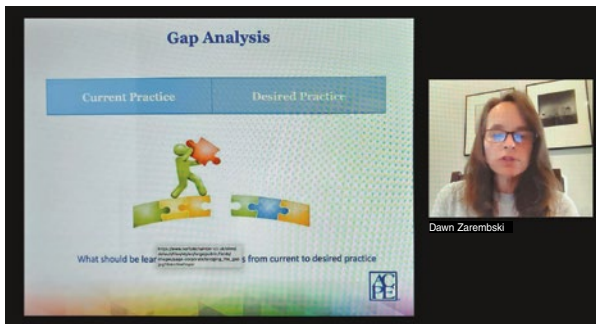


## Continuing Pharmacy Education Program

### ACPE's Continuing Education Administrator Workshop

These workshops provide an opportunity to share CE provider updates and build a community among CE providers.

ACPE staff hosted a virtual workshop for CE administrators in early September. Sixty-one participants representing 47 provider organizations participated in the two-day online workshop. The administrator workshop is intended to assist providers with adhering to ACPE's standards and policies and provides guidance on conducting a successful process of self-reflection on how the provider complies with ACPE's accreditation standards. The workshop includes a review of the ACPE Standards and describes examples and documentation needed to demonstrate compliance. ACPE's policies and procedures for the CE accreditation program including the comprehensive review process and continuing professional development are also described. These workshops provide an opportunity to share CE provider updates and build a community among CE providers. ACPE offers an administrator workshop typically twice a year. ■



### ACPE CE Online Reports Platform is here!

Over the years, we have received feedback from providers regarding difficulties in formatting self-assessment reports as electronic submissions into one PDF format. We listened and created an electronic report submission tool for you! All providers will submit their Self-Assessment report via ACPE's new online platform, **CESARS: Continuing Education Self-Assessment Report System!** Logins will be provided one year prior to reaccreditation evaluation. Providers can still prepare their report in a word document and can copy and paste the information into the platform once access is granted. Additional formatting can be done using the editor in the platform. CESARS has been piloted and used by over 30 providers since fall of 2021. Future plans for the platform include all provider reporting, i.e. interim and progress reports, being submitted through CESARS.

For more information on the CESARS platform, please visit the CESARS Information page, [www.acpe-accredit.org/cesarsplatform](http://www.acpe-accredit.org/cesarsplatform) ■



## Continuing Pharmacy Education Program

### Joint Accreditation for Interprofessional Continuing Education Leadership Summit

The 8th annual Joint Accreditation Leadership Summit, *Climbing Higher with IPCE*, was held virtually on September 29–30, 2022. The Summit is intended as a means for Joint Accredited providers to connect with other jointly accredited colleagues and discuss strategies and best practices for interprofessional continuing education (IPCE). Edward Salas, PhD, and Candice Storey Lee, EdD, provided the keynote session entitled, *Building and Sustaining the Team*, which explored key tenets for building, sustaining, and maximizing team effectiveness, and how these concepts are applied in another professional context such as athletics. The providers brainstormed together how to include these principles in their IPCE programs.

New this year! For the first time, the Summit featured sessions proposed and led by Joint Accreditation's inspiring community of CE professionals:

- Assessing the “Team” Factor, Can We Do It Better?
- Utilizing Effective Collaboration & Partnerships in Planning New Learning Formats for IPCE Programs
- Success Stories Related to Meaningful Evaluation of Change for the Team
- Integrating Diversity, Equity, and Inclusion Resources into Your Continuing Education Program
- Revitalizing IPCE Through Communication and Collaboration Within the Military Health System
- Sustaining IPCE in a World of Silos: A Case Study
- Meaningful Engagement of Patients and Students in IPCE: Achieving Commendation
- Creation and Use of DEI Toolkit for Educators

The next Leadership Summit is tentatively scheduled for May 2023. Stay tuned for further information. ■



JOINT ACCREDITATION™  
INTERPROFESSIONAL CONTINUING EDUCATION



Eduardo Salas, PhD  
Allyn R. & Gladys M. Cline Chair,  
Department Chair, Psychological Sciences,  
Rice University



Candice Storey Lee, EdD  
Vice Chancellor for Athletics and University  
Affairs and Athletic Director,  
Vanderbilt University



### Congratulations to the first two ACPE-accredited CE providers to earn Accreditation with Commendation

Global Education Group

University of Oklahoma College of Pharmacy

Commendation will be noted on ACPE's website in the CPE Provider Directory. Providers must demonstrate compliance with all Standards for Continuing Pharmacy Education, Policies, and Procedures and two commendation criteria in two subcategories of their choice to earn Commendation status. ■

([www.acpe-accredit.org/pdf/ACPECPECommendationCriteria2020UpdatedJuly2022.pdf](http://www.acpe-accredit.org/pdf/ACPECPECommendationCriteria2020UpdatedJuly2022.pdf))

## Continuing Pharmacy Education Program

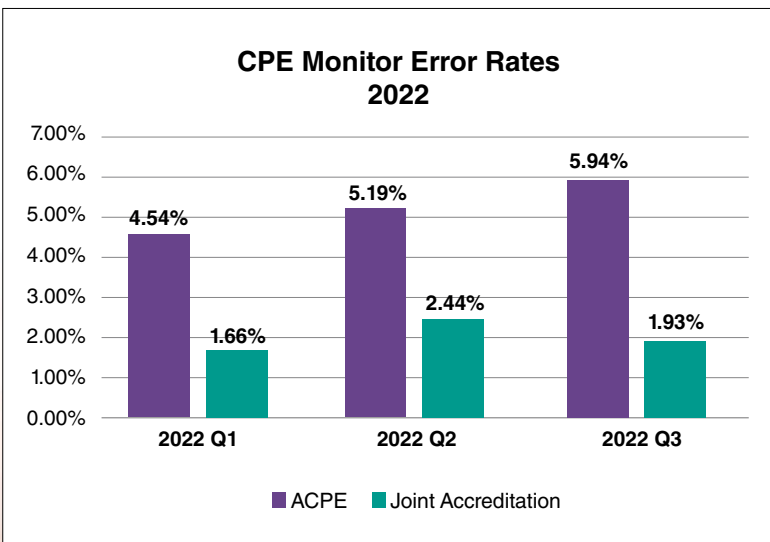
### CPE Monitor: Submission Error Rates While Awarding CPE Credit

ACPE recently added new error reporting statistics to the CPE Monitor Dashboard to allow CE providers to identify errors more quickly and efficiently. If a CE provider logs into the CPE Monitor portal, the dashboard on the home page will display each quarterly error-related statistic. Each of those statistics is now hyperlinked to an auto-filtered transaction detail report that allows users to quickly view recent errors. Clicking on a specific link will then display a list of transactions for the selected error recorded in the chosen quarter. An example is listed below for reference.



Quarterly CPE Submission Error Rates		
* Hover over titles for additional info about the statistic being reported		
	Current	Previous
Quarter:	2022 - Q3	2022 - Q2
Total Errors:	<a href="#">89,715</a>	<a href="#">90,492</a>
Error Rate:	4.20%	4.00%
# EPID Errors:	<a href="#">22,251</a>	<a href="#">22,557</a>
# UAN Errors:	<a href="#">5,457</a>	<a href="#">13,714</a>
# Participation Date Errors:	<a href="#">28,979</a>	<a href="#">34,739</a>
# Action Code Errors:	<a href="#">3,805</a>	<a href="#">2,878</a>
# 60 Day Submission Errors:	<a href="#">19,887</a>	<a href="#">23,869</a>
# of Duplicates Submitted:	127,754	148,998

We want to thank the providers for their efforts in managing your error rates. Something to note — we are seeing the error rates start to tick up again over the last three quarters.



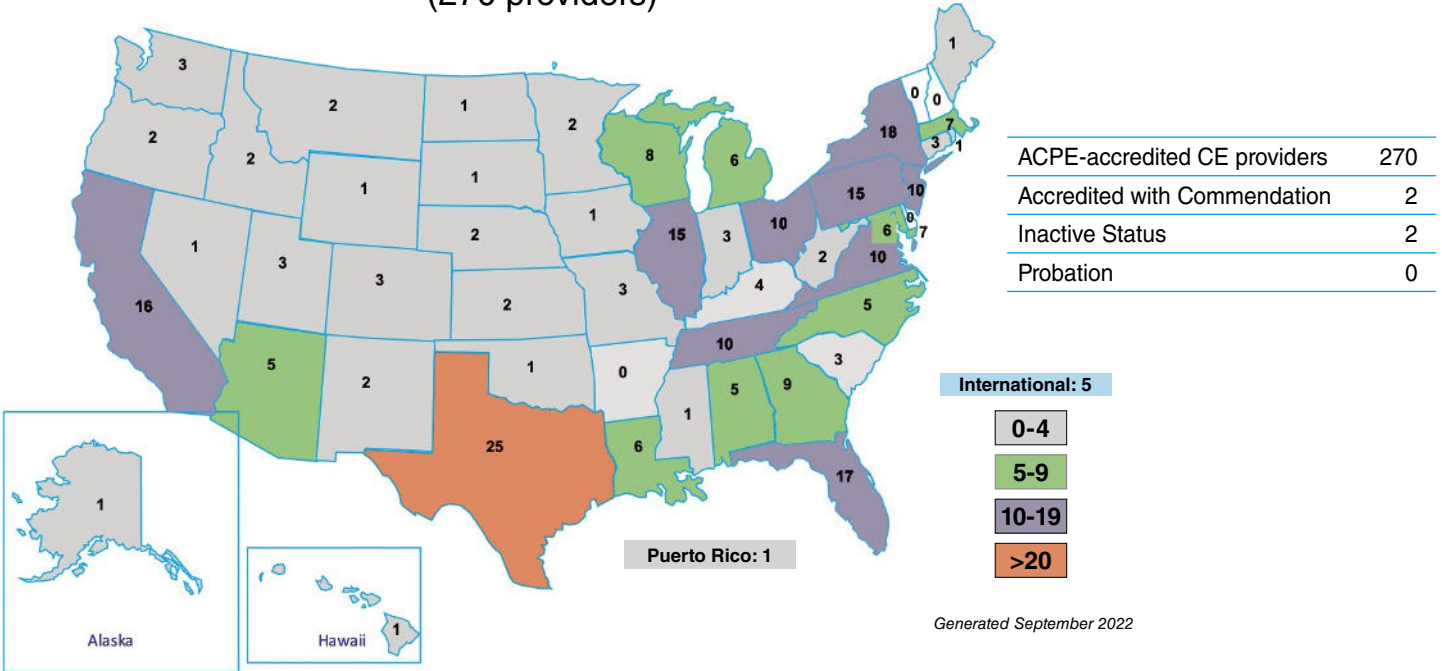
As a reminder — our goal is to achieve and maintain an error rate that is less than 3%. A few key things to remember to maintain a low error rate:

- Capture and verify E-Profile ID (EPID) and Dates of Birth. Services exist to verify the EPID and DOB.
- Confirm the correct live dates have been entered into the Provider Web Tool (PWT).
- Make sure your CE Activities are entered and submitted in the Provider Web Tool (PWT)
- Please submit the CE activity credit request within 60 days of activity completion by the learner.
- Use an LMS and/or Web Services to automate transmission of data to CPE Monitor.

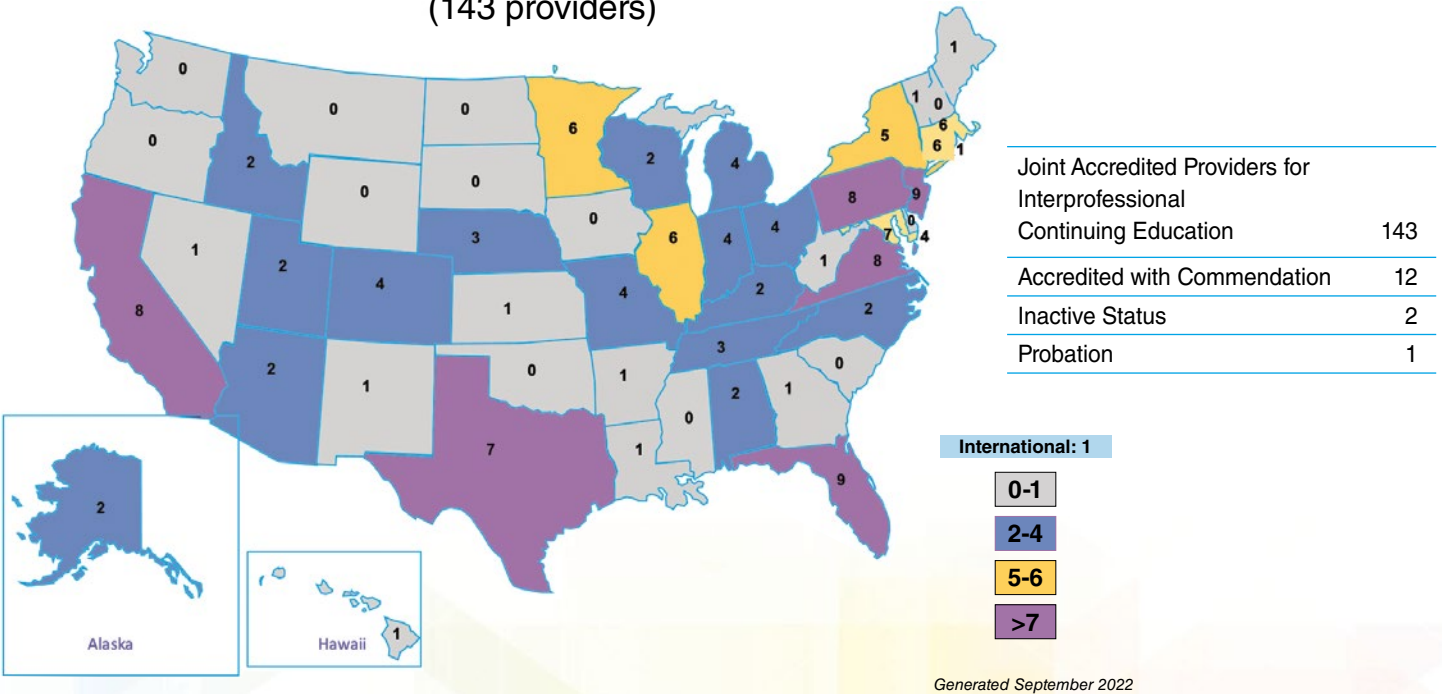
Please contact [cpemonitor@acpe-accredit.org](mailto:cpemonitor@acpe-accredit.org) if you require assistance or are interested in learning more about how to manage your error rates. ■


# Continuing Pharmacy Education Program

## Number of ACPE-Accredited CPE Providers by State (270 providers)



## Number of Jointly Accredited Providers by State (143 providers)





## Technology and Tools Corner

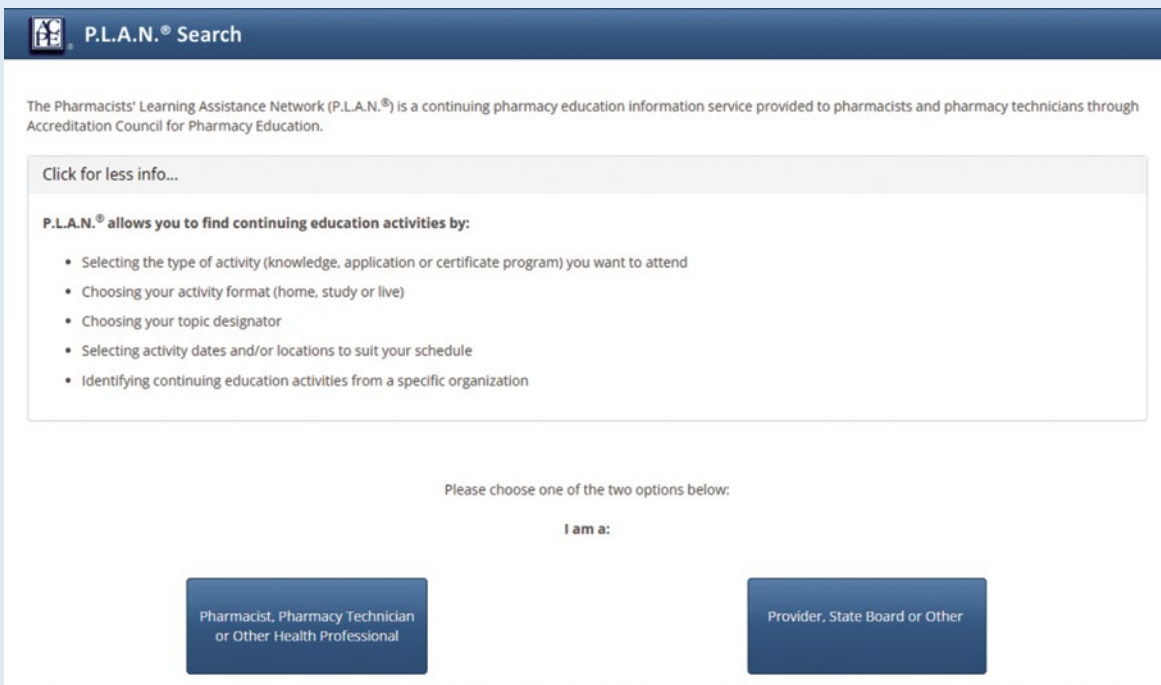
*This section of the newsletter will be dedicated to providing insight into tools and technology available to ACPE constituents. The goal is to provide tools and tips to the user community as well as provide knowledge and direction on how to best use the technology available to us.*

This article will focus on upcoming enhancements to the **Pharmacists' Learning Assistance Network (P.L.A.N.®)**.

ACPE's Pharmacists' Learning Assistance Network (P.L.A.N.®) is a continuing pharmacy education information service provided to pharmacists and pharmacy technicians through Accreditation Council for Pharmacy Education. This collection of continuing pharmacy activities offered by ACPE-accredited providers created through ACPE's Provider Web Tool (PWT) serves as the continuing education activity catalog for this service.

To honor the concept of continuous improvement, ACPE will be releasing a new version of the P.L.A.N.® search tool to allow for a more streamlined experience for learners as well as open the tool for use by other ACPE constituents (such as providers, state boards, and other interested parties).

Below you will see the new home screen which will allow for visitors to determine which search path a user may choose to walk down. The option taken by the user is best determined by assessing the constituent's role as an external party to ACPE.



**P.L.A.N.® Search**

The Pharmacists' Learning Assistance Network (P.L.A.N.®) is a continuing pharmacy education information service provided to pharmacists and pharmacy technicians through Accreditation Council for Pharmacy Education.

[Click for less info...](#)

**P.L.A.N.® allows you to find continuing education activities by:**

- Selecting the type of activity (knowledge, application or certificate program) you want to attend
- Choosing your activity format (home, study or live)
- Choosing your topic designator
- Selecting activity dates and/or locations to suit your schedule
- Identifying continuing education activities from a specific organization


Please choose one of the two options below:

I am a:

Pharmacist, Pharmacy Technician  
or Other Health Professional

Provider, State Board or Other

If the individual is a pharmacist, pharmacy technician, or other health professional, the path best chosen is the one on the left — as that will take you to the learner-specific search page. This page has been streamlined to help the learner find pharmacy-related CE Activities to be held in the future and hopefully fulfill a deficiency or requirement needed for re-licensure.


P.L.A.N.® Search

The Pharmacists' Learning Assistance Network (P.L.A.N.®) is a continuing pharmacy education information service provided to pharmacists and pharmacy technicians through Accreditation Council for Pharmacy Education.

[Click for more info...](#)

**Standard Search** Search By UAN or Title

1. Select your preferred activity availability dates (\*\*\*) REQUIRED (\*\*\*):  
 From:  To:
2. Indicate your profession:
3. Select the type of CPE Activity:
4. Select the CPE activity format:
5. Select the Topic Designator (OPTIONAL):
6. Select your preferred learning location for a LIVE CE Activity (OPTIONAL):
7. If you have a specific CPE interest, select keyword(s) from the lists below (ctrl-click).  

<b>Topics:</b> <input type="text" value="340B Drug Pricing Program"/> <input type="text" value="Accountable Care Organization"/> <input type="text" value="Accountable Pharmacy Organization"/> <input type="text" value="Accreditation"/>	<b>Drug/Devices:</b> <input type="text" value="Abortifacients"/> <input type="text" value="Acne Products"/> <input type="text" value="Aldosterone Receptor"/> <input type="text" value="Alpha Adrenergic Agonists"/>
--	--
8. Select the provider of the activity that you want to attend (OPTIONAL):
9. If you have a specific Competencies, select competencies(s) from the lists below (ctrl-click to select multiple) (OPTIONAL).  

<b>Pharmacist:</b> <input type="text" value="Foundational Knowledge"/> <input type="text" value="Patient-centered care"/> <input type="text" value="Problem-solving"/> <input type="text" value="Self-awareness"/>	<b>Pharmacist Technician:</b> <input type="text" value="Pharmacology"/> <input type="text" value="Foundational Professional Knowledge and Skills"/> <input type="text" value="Processing and Handling of Medications and Medication Orders"/> <input type="text" value="Regulatory and Compliance Knowledge and Skills"/>
--	---
10. If you require an activity designed to meet a re-certification requirement, select a certification from the list (OPTIONAL):
11. If you require an activity designed to meet a state regulatory requirement, select a state from the list (OPTIONAL):
12. If you require an activity designed to meet a state specific requirement, select a requirement from the list (OPTIONAL):

The search page itself has been re-designed to allow for a learner to quickly find CE based on key search parameters. We re-ordered the search parameters to simplify how CE activities are searched for. We also added a few new search parameters which are tied to some new data elements recently added to the Provider Web Tool (PWT). These data elements allow for CE providers to identify if an activity was designed for a specific re-certification requirement, for a specific state requirement or to teach about a specific topic for a specific state (see filter criteria 10, 11 and 12 in the image above).

In order to meet the need of the marketplace, we also added the ability to search by a full or partial universal activity number (UAN). This allows for a quick search of an activity if a colleague shared a UAN for a CE activity that you may want to consider attending yourself. We also decoupled the search functionality to allow for a more generic wild card search for activities based on a title or a portion of a title.

**P.L.A.N.® Search**

The Pharmacists' Learning Assistance Network (P.L.A.N.®) is a continuing pharmacy education information service provided to pharmacists and pharmacy technicians through Accreditation Council for Pharmacy Education.

[Click for less info...](#)

Standard Search      Search By UAN or Title

Enter a full or partial Universal Activity Number (UAN)

-- OR --

Enter a full or partial CE Activity title:

Clear      Submit

If the constituent user is a Provider, State Board, or other Entity, they should choose the path on the right side when one is on the initial home page. Once clicking the button, you will be taken to the Organization search page. This page is intended for those parties that have a good working knowledge of the Provider Web Tool as well as the components of a UAN.

For those individuals familiar with the provider web tool (PWT), you will find this search tool is not as extensive yet very similar in appearance to the Activity Definition Form (ADF) search criteria. This feature was added to allow third-party non-learners that do not have access to the provider web tool to be able to search for activities in the past as well as those currently active.

In addition, you will be able to search for activities designed specifically for re-certification or for meeting a state-specific requirement.



**P.L.A.N.® Search**

The Pharmacists' Learning Assistance Network (P.L.A.N.®) is a continuing pharmacy education information service provided to pharmacists and pharmacy technicians through Accreditation Council for Pharmacy Education.

[Click for less info...](#)

Standard Search [Search By UAN or Title](#)

Enter your search criteria:

Provider Number:    
 Providership:    
 Year:    
 Seq #:    
 Format:    
 Topic Designator:    
 Audience:

Select a release date range (OPTIONAL):

From  To

Only RSS Activies (OPTIONAL):

If you require an activity designed to meet a re-certification requirement, select a certification from the list (OPTIONAL):

If you require an activity designed to meet a state regulatory requirement, select a state from the list (OPTIONAL):

If you require an activity designed to meet a state specific requirement, select a requirement from the list (OPTIONAL):

You will also find the quick search function of an activity to allow for finding a specific activity that was held in the past based on an actual UAN. We also allow for search by title or a portion of a title here if that is what is known by a user seeking additional info about a specific ACPE-accredited CE Activity.

**P.L.A.N.® Search**

The Pharmacists' Learning Assistance Network (P.L.A.N.®) is a continuing pharmacy education information service provided to pharmacists and pharmacy technicians through Accreditation Council for Pharmacy Education.

[Click for less info...](#)

Standard Search [Search By UAN or Title](#)

Enter a full or partial Universal Activity Number (UAN)

-- OR --

Enter a full or partial CE Activity title:

**Please note:** all search results will only return those CE activities the provider has approved for display in the P.L.A.N.® application. When entering activities into the Provider Web Tool (PWT), the CE provider is responsible for deciding which activities can be displayed to the public by indicating it is approved for display.

The changes outlined here will be released for public use in early 4th quarter. We hope these functions and features help improve your search experience. Happy CE searching ACPE friends! ■

## International Services Program

### Fall 2022 Evaluation Cycle

ACPE's International Services Program (ISP) is undergoing a period of unprecedented growth, with new applications for Certification being received on virtually a monthly basis. Including the six initial evaluation visits conducted in the Fall Evaluation Cycle (see below), ISP is currently processing 26 applications for Certification. Within the next two years, the number of countries with ACPE-certified programs is expected to expand from 8 to 14, with anticipated applications from Egypt, Iraq, Pakistan, Oman, Libya, and Palestine.

#### ISP conducted the following 13 evaluation visits in Fall 2022:

##### Initial Comprehensive Evaluation for Certification:

- Arab Academy for Science, Technology and Maritime Transport, College of Pharmacy, Egypt
- Ibn Sina National College for Medical Studies, Saudi Arabia
- Misr International University, Faculty of Pharmacy, Egypt
- Mutah University, Faculty of Pharmacy, Jordan
- University of Sharjah, College of Pharmacy, United Arab Emirates
- Yarmouk University, Faculty of Pharmacy, Jordan

##### Comprehensive Evaluation for Continued Certification:

- Qassim University, College of Pharmacy, Saudi Arabia

##### Two-Year Post-Certification-Focused Visit:

- Batterjee Medical College – Jeddah Branch, Pharmacy Program, Saudi Arabia
- Lebanese International University, School of Pharmacy, Lebanon

##### Focused Evaluation Visits:

- Dubai Pharmacy College for Girls, United Arab Emirates
- Ras al Khaimah Medical and Health Sciences University, College of Pharmacy, United Arab Emirates

##### Verification Evaluation Visits:

- Al-Ahliyya Amman University, Faculty of Pharmacy, Jordan
- Middle East University, Faculty of Pharmacy, Jordan

ISP thanks the volunteers, International Commissioners, and ACPE Board Members who served on the evaluation teams. ■



Above: Evaluation visit to Mutah University

At right: Evaluation visit to Yarmouk University



## International Services Program

### Revision of the Certification Quality Criteria

The ACPE Board of Directors, International Commission, and International Services Program (ISP) Staff have begun work on the first major revision of the Certification Quality Criteria (standards). The process and timeline for the revision can be accessed via the following link: [www.acpe-accredit.org/pdf/ISP/QualityCriteriaRevisionTimeline.pdf](http://www.acpe-accredit.org/pdf/ISP/QualityCriteriaRevisionTimeline.pdf). The new Quality Criteria will be implemented on July 1, 2026.

All stakeholders are invited to submit comments, suggestions, and edits via the following survey instrument link: [acpe-accredit.formstack.com/forms/qualitycriteriarevision](https://acpe-accredit.formstack.com/forms/qualitycriteriarevision). ■

### Meeting of the International Services Program Advisory Group (ISPAG)

On September 20, 2022, members of ACPE Staff, International Commission (IC) and ISPAG met online and in person at the 80th FIP World Congress of Pharmacy and Pharmaceutical Sciences in Seville, Spain. The group met to discuss current ISP activities and the revision of the Certification Quality Criteria. ■

*At right: ISPAG meeting conducted in Seville at the FIP World Congress.*



### Future Meetings, Projects, and Events

#### ACPE International Commission (IC)

The International Commission (IC) is scheduled to meet on November 14–16, 2022, in Chicago, Illinois, USA. The Commission will meet to discuss the activities and operations of ISP and to make recommendations to the ACPE Board of Directors, which is scheduled to meet in January 2023. Commissioners are looking forward to their first in-person meeting in three years.

#### Terminology Change

As of January 1, 2023, ISP will offer “International-Accreditation,” “International-Preaccreditation,” and “Provisional International-Accreditation” to qualifying pharmacy degree programs outside the United States of America and its Territories. These will replace ACPE’s current “Certification,” “Precertification” and “Provisional Certification” statuses. The new designations do not imply or confer eligibility to graduates of a program with such status to apply directly to sit for the North American Pharmacist Licensure Examination (NAPLEX) for licensure in the United States. Subject

to meeting certain requirements, detailed in revised Policies and Procedures that will be effective January 1, 2023, the designation of all programs with current Certification Status will be changed to reflect the new terminology on January 1, 2023.

ACPE has published the revised Policies and Procedures that reflect the new terminology and requirements.

#### The 7th Regional Pharmacy Faculty Development Workshop

ISP, in conjunction with Al Ain University (AAU, UAE) (host and sponsor), the Commission for Academic Accreditation of the Ministry of Education, UAE (CAA), and the American Association of Colleges of Pharmacy (AACCP), is pleased to announce the 7th Regional Pharmacy Faculty Development Workshop on “Best Practices for Assessment in Pharmacy Education.” The workshop will be held at Al Ain University – Abu Dhabi Campus, UAE, on January 16-17, 2023. Dr. Melissa S. Medina, Ed.D., University of Oklahoma, College of Pharmacy, will be the workshop speaker. ■

## ASHP/ACPE Pharmacy Technician Accreditation Commission

### About PTAC

The ASHP/ACPE Pharmacy Technician Accreditation Commission (PTAC) meets twice yearly in May and October. Actions of the Commission are approved by both the ACPE and ASHP Boards in January and June. Each Commissioner, with the exception of public members, must have expertise and experience in quality assurance of pharmacy technician education and training and/or the contemporary education, training or practice of pharmacy technicians.



#### Members of the PTAC:

Mathew Rewald, Chair

Janet Kozakiewicz, Past Chair

Tate Trujillo, Vice-Chair

Amisha Arya

Nichole Foster

Melissa Heigham

Matthew Kelm

Leah Matthews

Jeenu Philip

Irene Villatoro

Kim Croley, ACPE Board Liaison

Nishanimy Kasbekar, ASHP Board Liaison

Lisa Lifshin, Non-Voting Member ■

BY THE NUMBERS:	ASHP/ACPE Accredited Pharmacy Technician Programs	JANUARY 2022	JUNE 2022
	<b>Number of ASHP/ACPE Accredited Programs</b>	<b>226</b>	<b>254</b>
	New Applications	2	2
	Voluntary Withdrawals	7	6
	Reaccreditation Reviews	17	13
	Midterm Progress and Special Case Reviews	24	20

### Contact Us...

#### Accreditation Council for Pharmacy Education

190 South LaSalle Street, Suite 3000  
Chicago, IL 60603-3446

Phone: (312) 664-3575

Fax: (866) 228-2631

Website: [www.acpe-accredit.org](http://www.acpe-accredit.org)

#### General office hours:

Monday through Friday  
8 a.m. – 5 p.m. CST

#### ACPE Update Editor

Jan Engle, PharmD, PhD (Hon), FAPhA,  
FCCP, FNAP

[info@acpe-accredit.org](mailto:info@acpe-accredit.org)

#### For Professional Degree Program questions:

[csinfo@acpe-accredit.org](mailto:csinfo@acpe-accredit.org)

#### For Continuing Pharmacy Education Program questions:

[ceinfo@acpe-accredit.org](mailto:ceinfo@acpe-accredit.org)

#### For International Services Program questions:

[international@acpe-accredit.org](mailto:international@acpe-accredit.org)

#### For Pharmacy Technician Program Accreditation:

[asd@ashp.org](mailto:asd@ashp.org)

#### For general ACPE information:

[info@acpe-accredit.org](mailto:info@acpe-accredit.org)